

REA85390

THIS DOCUMENT CONTAINS INFORMATION PROPRIETARY TO UNIT RIG, A DIVISION OF TEREX CORPORATION IT SHALL NOT BE REPRODUCED, USED OR DISCLOSED TO ANYONE WITHOUT PRIOR WRITTEN PERMISSION OF UNIT RIG
COPYRIGHT DATE -----

T. DODDEN

ENG APP

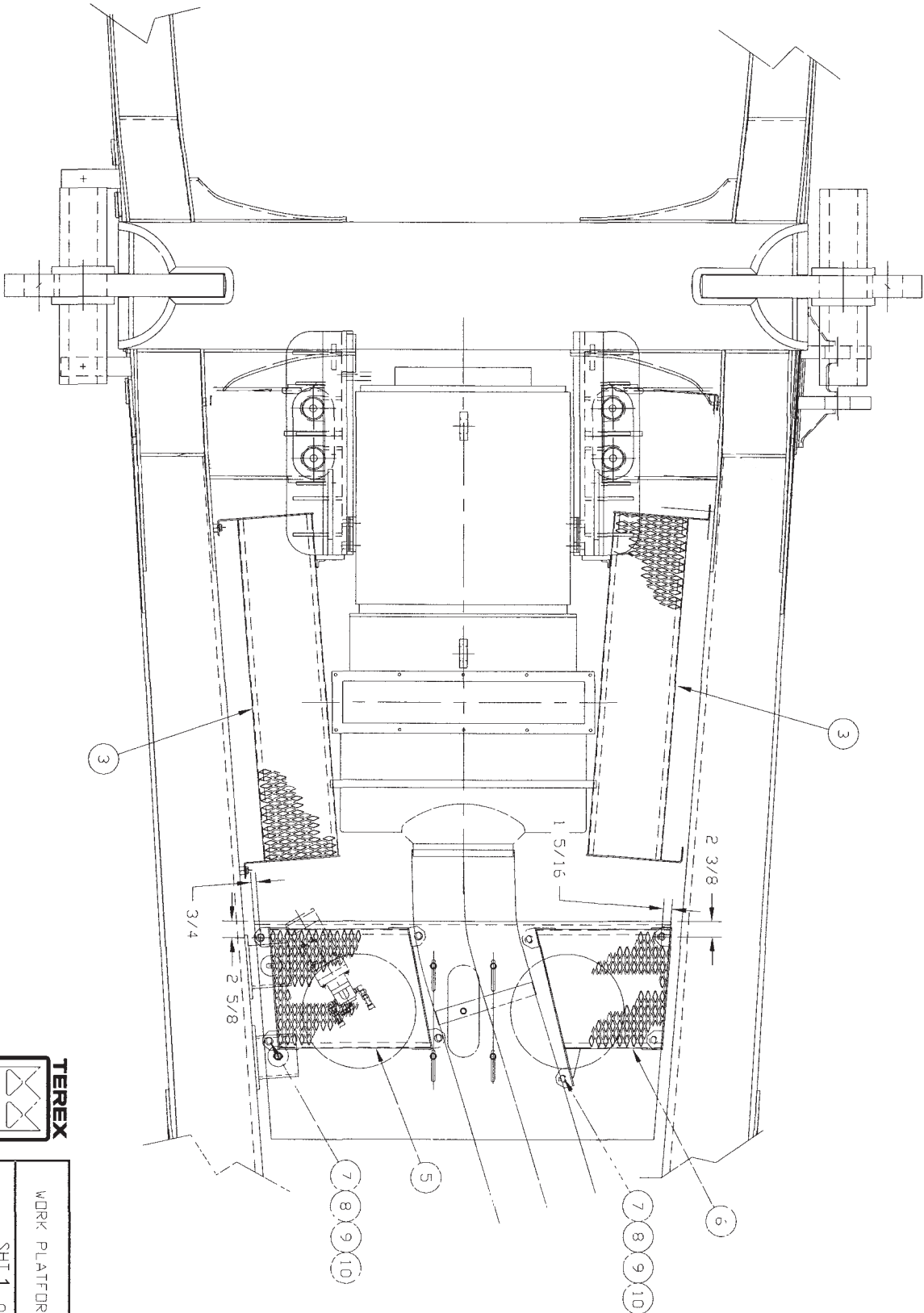
REV GX

95495

94395

91384

EN. NO



WORK PLATFORM ASSY

SHT 1 OF 3

REA85390

THIS DOCUMENT CONTAINS INFORMATION PROPRIETARY TO UNIT RIG, A DIVISION OF TEREX CORPORATION IT SHALL NOT BE REPRODUCED, USED OR DISCLOSED TO ANYONE WITHOUT PRIOR WRITTEN PERMISSION OF UNIT RIG
COPYRIGHT DATE -----

T. DODDEN

DES APP

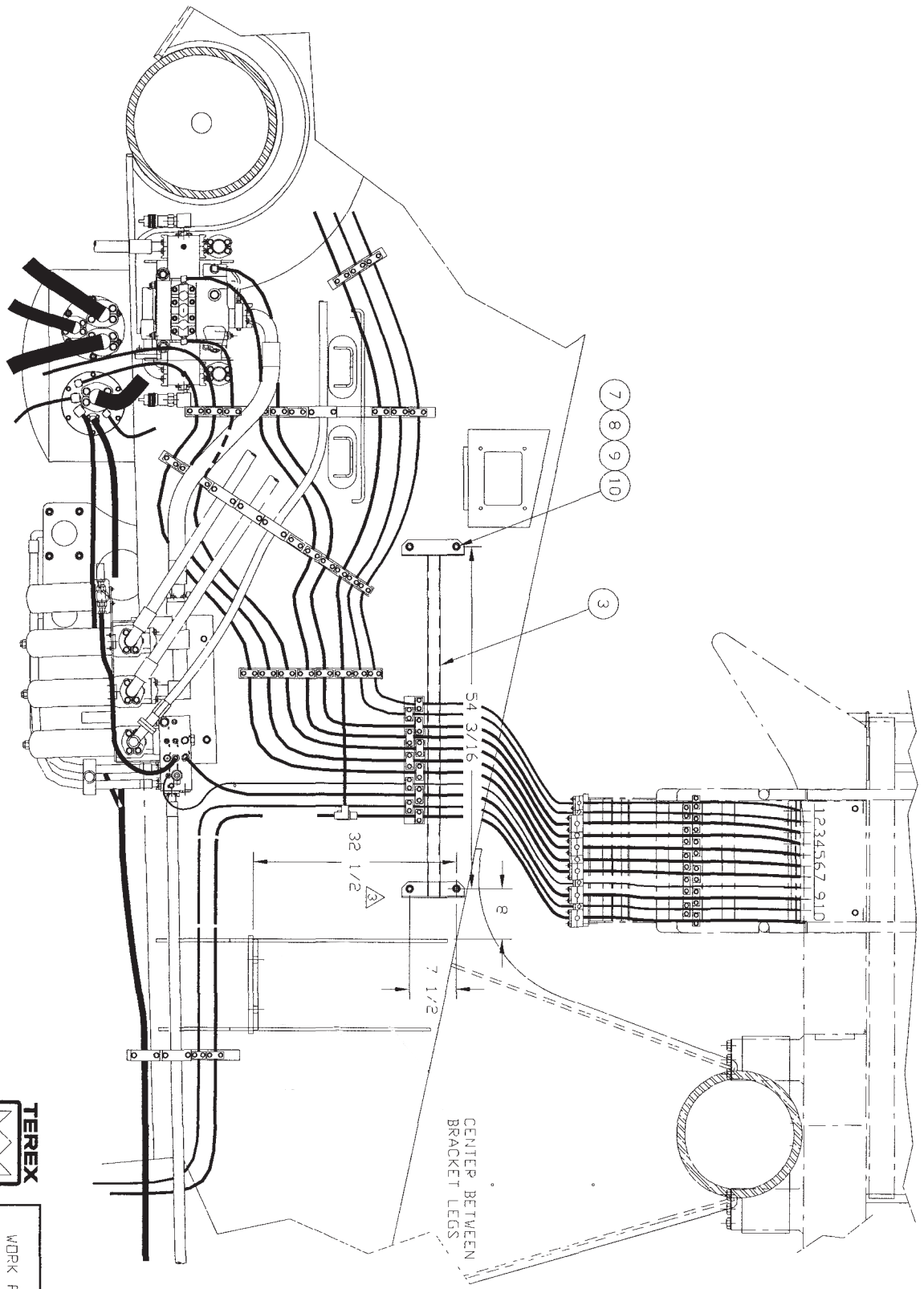
REL. CK

95495
94395
91384
EN. NO

INSIDE LEFT FRAME



WORK PLATFORM ASSY
SHT 2 OF 3
REA85390

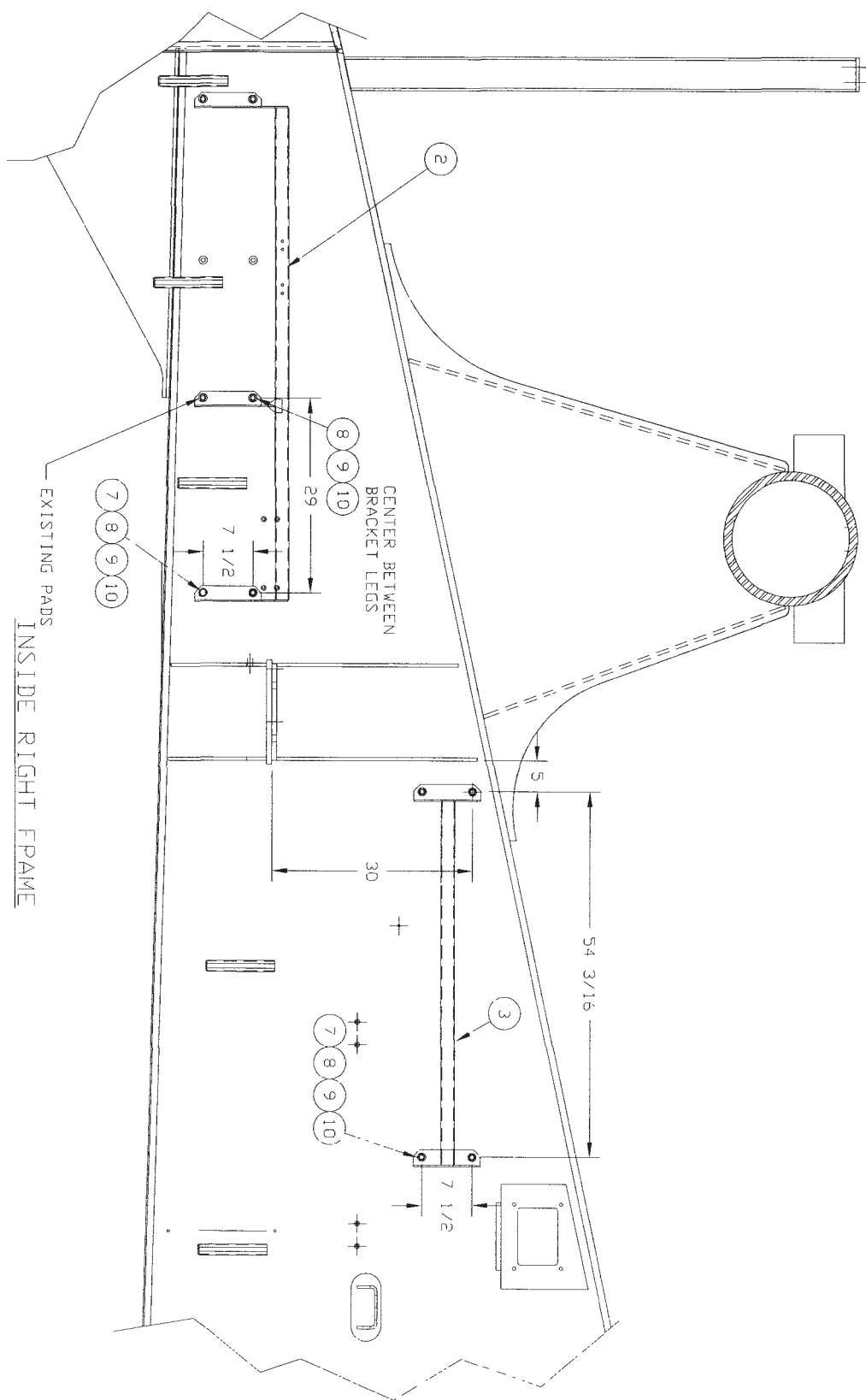


THIS DOCUMENT CONTAINS INFORMATION PROPRIETARY TO UNIT RIG, A DIVISION OF TEREX CORPORATION IT SHALL NOT BE REPRODUCED, USED OR DISCLOSED TO ANYONE WITHOUT PRIOR WRITTEN PERMISSION OF UNIT RIG
COPYRIGHT DATE -----

DR T. DODDEN
ENC. 299

REV. 0X

95495
94395
91384
EN. NO.



WORK PLATFORM ASSY
SHT 3 OF 3
REA85390

REA85390

ITM	QTY	UM	COMPONENT	DESCRIPTION
2	1		RE84384C	PLATFORM, R.H. FRONT
3	2		RE84384K	PLATFORM, MIDDLE
5	1		RE84384M	PLATFORM, L.H. REAR
6	1		RE84384N	PLATFORM, R.H. REAR
7	20		33387	PAD, BOLTING 5X8 NC 1-1/4 OD X 3/4 LG
8	20		10044	CAPSCR, HX, 5X8-11NC X 1-1/4 GR 5 WASHER, LK.
9	20		10183	HELI, 5/8 X 1.079 OD WASHER, FL, 5/8
10	20		25912	X 1.750 OD



WORK PLATFORM ASSY

SHEET 1 OF 1

REA85390